

GLS Custom Menu Extender

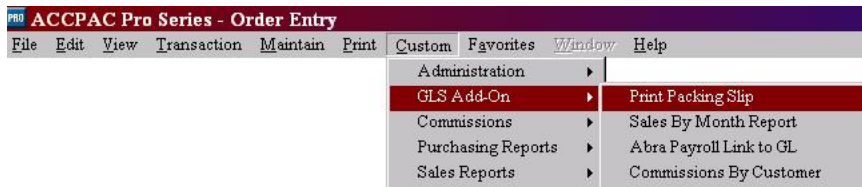
(Pro 6.5 – 7.x SQL & VFP (SBE & EE))

4/2004

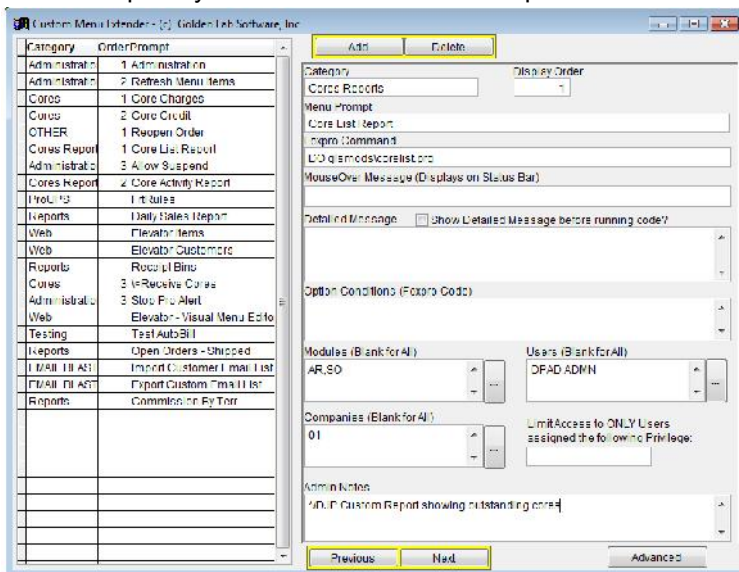
The Custom Menu Extender is a one-stop shop that allows quick and easy access to information about each custom product you own. This tool can easily save you hours by allowing you to easily assign access to custom menu options by tagging users, applications, and/or assigning privileges. The tool also gives you one place to store and track version numbers, contact information, and/or update history.

Features

- Create a Virtually Unlimited menu number of custom menu options and categories
- Organize! - Define Categories for organizing your menu options and creating sub-menus.



- Limit a menu option's availability to specific companies, modules, or users from a single user interface!
- Application Notes – (Optional) Give detail notes or instructions that display before an application runs
- Easily Assign menu options to multiple users by tagging user names from a list
- Limit Menu Access through privileges, user assignment, or any administrator defined condition.
- System Management – Track updates, installation dates, documentation, and known issues with the menu option.
- Imports your current custom menu options automatically



4740 Old Trail Court
Cumming, GA 30041

Phone 770) 886-8947
E-mail: DavidP@GoldenLabSoftware.com